

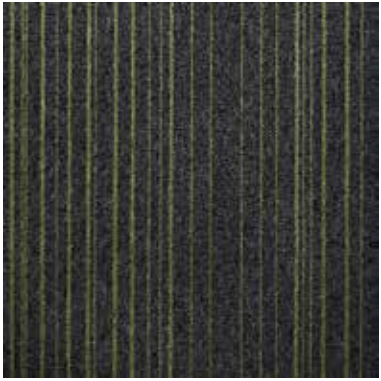


BSH WALLS & FLOORS

Central Point - Expansion Point - Creative Spark CARPET TILES

PQS





Central Point 659 **PQS**



Expansion Point



Expansion 575 **PQS**



Central Point 839 **PQS**



Central Point



Expansion 847 **PQS**



Central Point 939 **PQS**



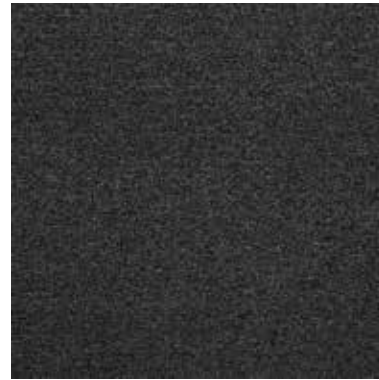
Expansion 987 **PQS**



Creative Spark 222 PQS



Creative Spark 333 PQS



Creative Spark 989 PQS



Creative Spark 543 PQS



Creative Spark 566 PQS



Creative Spark 611 PQS



Creative Spark 927 PQS



Creative Spark



Specification

Tile size
50 x 50 cm

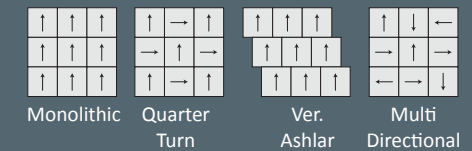
Construction
Tufted 1/10 gauge loop

Total weight
4100 g/m²

Pile weight
540 g/m²

Total thickness
6.2 mm

Installation





BSH WALLS & FLOORS

SINCE 1997

More than two decades of excellence

**P.O. Box: 30872, Shop No. 2,
Shaikha Maryam Bint Rashid Building, Umm Hurair 2, Dubai**

Tel: +971 4 309 4600

**Email: info@bshwallsandfloors.com
Website: www.bshwallsandfloors.com**

Linkedin:

<https://www.linkedin.com/company/bshwallsandfloors>